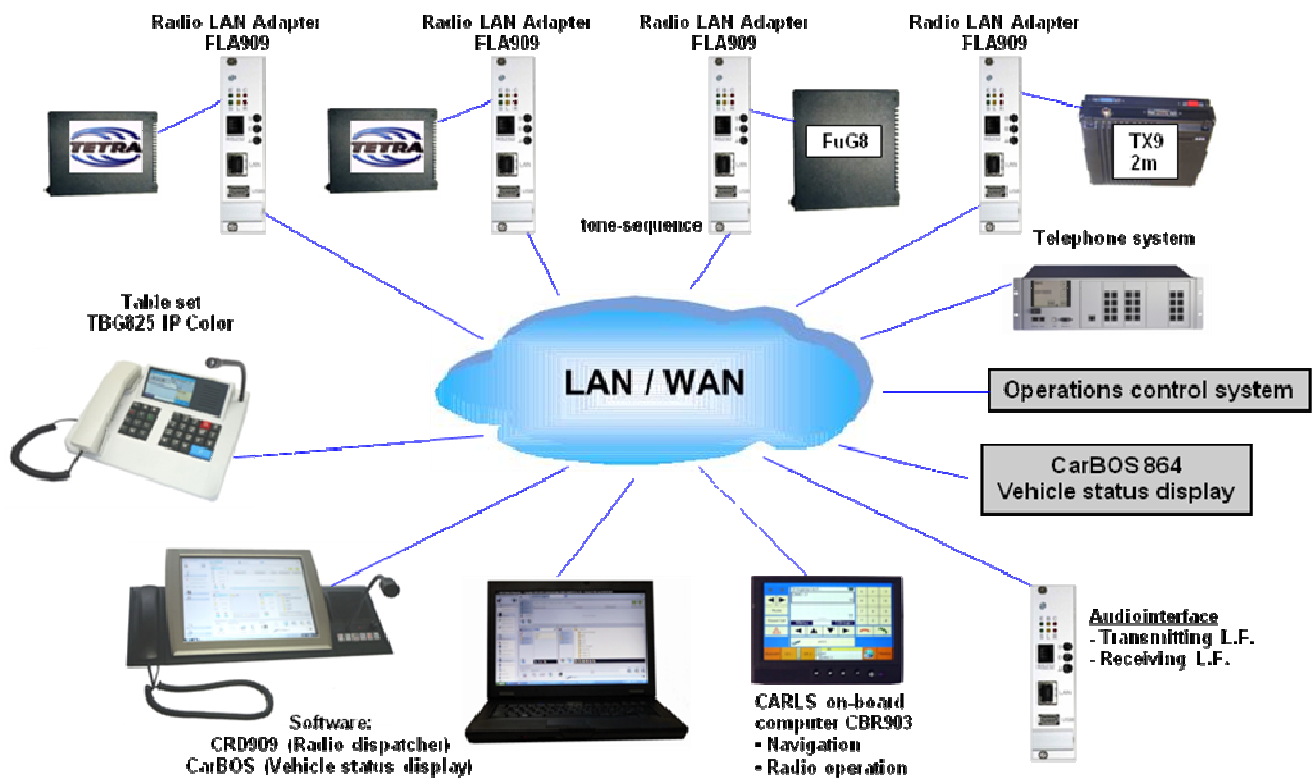


CAROLA

CARLS Radio Over LAN



CAROLA stands for „**CARLS** **R**adio **O**ver **L**AN“. It is a system to operate analog and digital radios over IP-based networks. It provides a highly scalable system architecture with three different control sets, a standalone table set, an on-board computer and a software solution running on standard PC hardware. All the control sets are fully compatible and can be used together in mixed installations. **CAROLA** is suitable for office installations and is also a practical backup solution for control centers. It is a perfect fit for mobile control centers, too. By being independent from any wire-based interfaces of digital radio infrastructures it is easy to implement cost-effective system setups.



System overview

- Four components:
 - Radio LAN Adapter **FLA909** to connect radios to the LAN
 - Table set **TBG825 IP Color**
 - PC-Software CARLS Radio Dispatcher **CRD909**
 - Carls on-Board Computer **CBR903**
- Architecture based on concept "No single point of failure"
 - High security and availability
 - Defect of a single component does not impact other parts of the system
- Supports TETRA radios of various manufacturers
- Supports analog radios
- Supports telephone systems
- Support for operations control systems
- Supports vehicle state indication (CarBOS864)
- Connection between radio interface and console IP-based
- Digital transmission of voice data (VoIP)
- Flexible and scalable system setup
- Up to 100 radio interfaces (**FLA909**)
- Up to 100 control sets (**CRD909**, **TBG825 IP Color** and **CBR903** mixed)

System functionality

TETRA

Funktionen	TBG825 IP Color	CRD909	CBR903
Group call / Individual call	X	X	X
DMO / TMO selection	X	X	X
TETRA – Emergency	X	X	X
Gateway	X	X	X
Repeater	X	X	X
Dynamic Groups	X	X	X
Readout and use of talk groups configured in radio	X	X	X
Readout and use of radio's folder structure	X	X	X
User defined folder structure		X	
Send and receive SDS and status messages		X	X
Quality of Service	X	X	X
Direct access to the MMI (console interface) of the radio system	X	X	X

Availability of functionality depends on the services the TETRA radio supports over its PEI interface.

Intercom

Two control sets, both the **TBG825 IP Color** and the **CRD909**, support direct voice communication. For this kind of communication radio resources are not involved. There are two different modes. First is a unidirectional broadcast call from one control set to all other sets in the system. In addition a bidirectional One-To-One communication can be initiated.

Radio-LAN-Adapter FLA909

The Radio-LAN-Adapter **FLA909** allows separation of radio and control set via a LAN/WAN connection.



Design

- Printed circuit board (PCB) for use in 19" racks, comes with additional backplane PCB (Height: 3HE, Width: 6TE)
- Power supply and radio access via backplane
- LAN connection (Ethernet 100 MBit) via front panel

Variants

- Single: Supports only one radio (but many control sets) in one installation
- Multiple: Supports combination of many radios and many control sets

TETRA connectivity

- Supports TETRA radios of various manufacturers
- Readout and caching of talk groups configured in radio
- Readout and caching of radio's folder structure

Analog radio connectivity

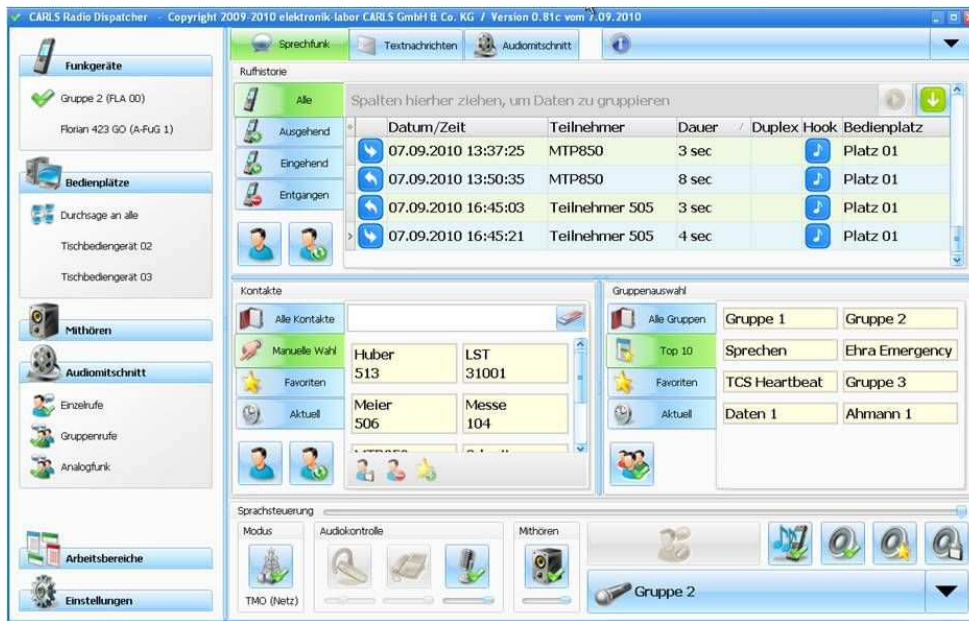
- Support of 4m- und 2m-radios of different brands
- Channel selection BCD coded
- Switching between operating modes (Simplex/Duplex)
- Operate squelch
- Support for SAS interface of Teledux9 radios

Telephony

In addition to their ability to operate the radios of a CAROLA installation all control sets can act as a phone. This feature requires an optionally available telephone gateway unit. The gateway connects the CAROLA control sets to telephony systems like GSM/UMTS gateways or a PBX. CAROLA works with telephony systems that support the SIP protocol standard for signaling.

Carls Radio Dispatcher CRD909

The Carls Radio Dispatcher **CRD909** is an application running on PC hardware. The **CRD909** enables its users to operate all radios available in the CAROLA installation.

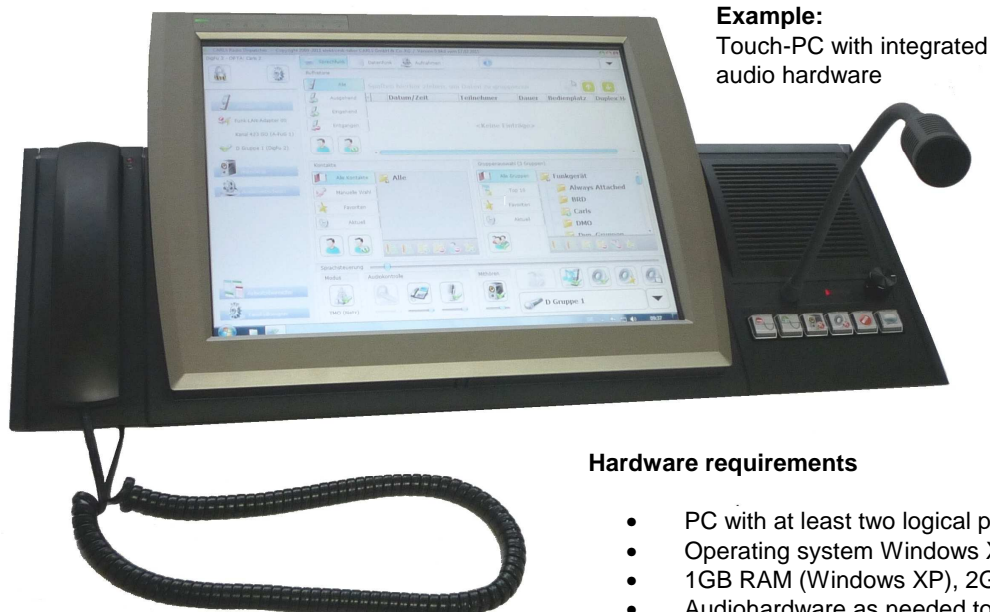


User interface

- Modern look, intuitive use
- Direct access to the MMI of digital radios (console interface)
- Two concepts of use:
1. Mouse and keyboard
2. Touchscreen
- Extensive administration of user rights
- Look and functional range widely adjustable
- Headset, Handset and/or Microphone/Speakers can be attached
- External PTT using a pedal switch

Features

- Select active radio, select talk group, select individual call partner
- Automatic use of talk groups as available in selected radio
- Switching between TMO and DMO modes
- Individual calls (Half duplex and full duplex), groups calls, extensive call history
- Flexible volume control (Master volume, separate control of headset volume, handset volume, volume of ambience listening)
- Ambience listening on dedicated speakers
- Send and receive SDS messages, SDS template management
- Operation of analog radios
- Fully customizable voice recording (Optional)
- Telephony support (Optional)
- Map integration supporting GPS-based location systems (Optional)



Example:

Touch-PC with integrated audio hardware

Hardware requirements

- PC with at least two logical processor cores
- Operating system Windows XP or Windows 7
- 1GB RAM (Windows XP), 2GB RAM (Windows 7)
- Audiohardware as needed to install microphone, speakers, headset and/or handset

Table set TBG825 IP Color

The **TBG825 IP Color** is a versatile remote controller in a modern style case for in-house usage. It supports control of and voice communication over all digital and analog radios available in a **CAROLA** installation.



- Convenient and efficient controlling for one or more operators
- Build-in version for control station tables
- Easy handling with goose-neck microphone and speaker
- Integrated monitoring speaker
- Optional connectors for a third and fourth speaker
- Hand set with PTT-Key for private conversation (duplex)
- High-contrast 4,3" color-display 480 x 272 Pixels
- Interface to external accessories (headset, pedal switch and voice recording)
- LAN connector (Ethernet 100 MBit)

Specifications TBG825 IP Color

Power supply	12V DC / 800mA using an external power supply unit or PoE (Power over Ethernet)
Temperature range	0° up to +60° Celsius
Dimensions	18 mm (Front) raising to 48 mm (Back) x 300 mm x 225 mm (H x W x D)
Color	Light grey (similar RAL 7035)
Material	ABS

On-board computer CBR903

The CARLS on-board computer **CBR903** was developed especially for in-car installations. It can also be used as a compact alternative to the other two control set options, **TBG825 IP Color** and Carls Radio Dispatcher **CRD909**.

The **CBR909** is operated via its touchscreen. For voice communication several different options are available:

- Handset
- Headset
- Speaker/microphone combination

In mobile control centers or for other mobile solutions the **CBR903** can be provided with an optional route guidance system (See product information sheet **CBR903 DAT**).



On demand we can deliver special editions. We also develop customised solutions for your hard- and software requirements.

<p>Product information 05/13 909-M002-06</p> <p>(technical modifications possible)</p>	<p>elektronik-labor CARLS GmbH & Co. KG 48485 Neuenkirchen, Bergweg 6 48481 Neuenkirchen, Postfach 10 41 GERMANY Tel.: 05973/9497-0 Fax.: 05973/9497-19 E-Mail: info@el-carls.de Internet: http://www.el-carls.de</p>
--	---